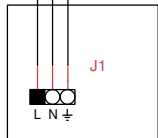


24/120/230 Vac
L
N
PE

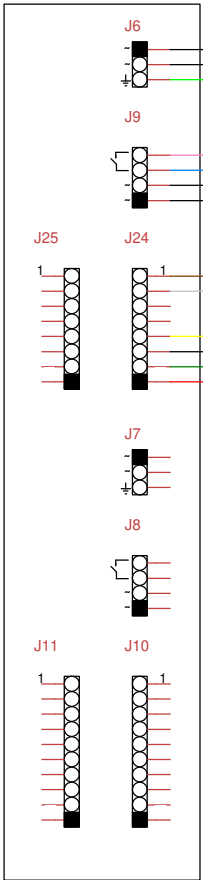
MBX - JUNCTION BOX

MPXHD - PTZ UNIT

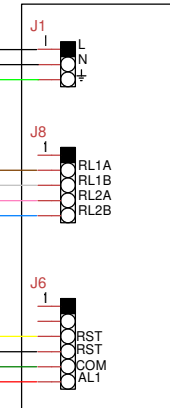
MAINS CONNECTOR BOARD



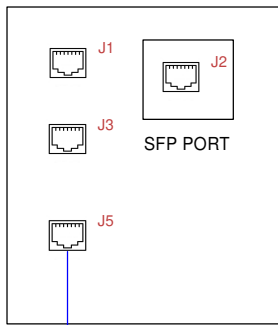
CONNECTOR BOARD



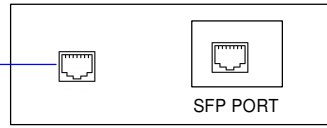
CONNECTOR BOARD



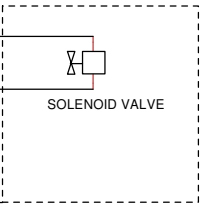
SWITCH BOARD



SWITCH BOARD



WASEX - WASHER ***



CAT 5e CABLE

NOTES:

MPX2CABLARM*1 armoured cable with pre-fitted connectors (PTZ side) - 4m or 10 m
MPX2CABL*1 unarmoured cable with pre-fitted connectors (PTZ side) - 4m or 10 m

MPXHD PTZ unit always 24VAC power supply version if powered through MBX junction box

** cable not supplied
*** valid only for 24Vac version

LEGEND

BK: black
WH: white
YL: yellow
PK: pink
BL: blue
RD: red
GR: green
BR: brown
GY: grey
YL/GR: yellow-green

Title MPX2-MBX-WASEX-MPX2CABLE		
Author Marco Saccardo Videotec S.p.a.		
File e:\200\... MPX2-MBX-WASEX_ARMOURED1.dsn	Document	
Revision 2.0	Date 29/04/2022	Sheets 1 of 1